

Indianapolis Region Demographics

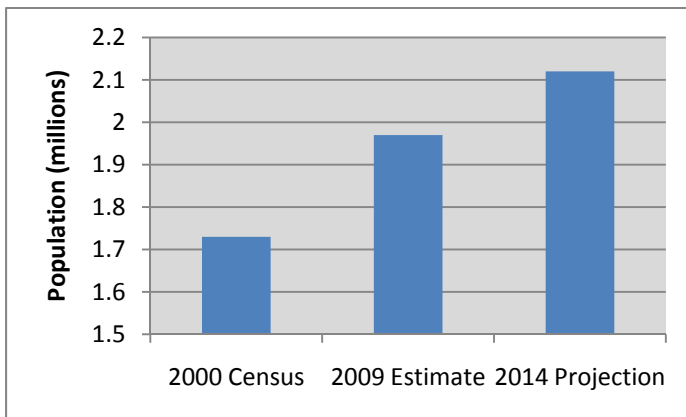


The Indianapolis Region is home to nearly 2 million residents and over 1 million workers. Over 8% of the population speaks a language other than English at home, adding broad cultural diversity to the area. Regional educational attainment continues to rise and is of the highest priority among local civic leaders.

Population

Population 2009: 1,967,364

Population 2014 Projection: 2,122,745



Source: U.S. Census Bureau and Applied Geographic Solutions.

Employment: 2009

Age 16+ Population (2009): 1,518,521

In Labor Force (2009): 1,031,898

Number of Employees (Daytime Pop.): 1,038,290

Emp. in Blue Collar Occupations	332,810	38.2%
Emp. in White Collar Occupations	539,441	61.8%

Source: U.S. Census Bureau and Applied Geographic Solutions.

Household Income Breakdown: 2009

Median Household Income: \$59,107

Under \$35,000	27.9%
\$35,000 - \$49,000	14.3%
\$50,000 - \$74,999	19.7%
\$75,000 - \$99,999	14.4%
\$100,000 - Above	23.6%

Source: U.S. Census Bureau and Applied Geographic Solutions.

The Indianapolis MSA Ranks #4 in U.S. college degree attainment growth from 2000-2008.

Source: U.S. Census Bureau, 2010.

Highest Educational Attainment: 2009

	2009 Estimate	Percent	Percent Change 1990 - 2000
High School Graduate	398,970	31.3%	10.2%
Some College, No Degree	252,879	19.8%	28.9%
Associates Degree	88,667	7.0%	30.7%
Bachelors Degree	258,394	20.3%	56.8%
Graduate Degree	134,452	10.5%	37.5%

Source: U.S. Census Bureau and Applied Geographic Solutions.

Age Breakdown: 2009

Median Age: 35.9

Under 20	28.4%
20 - 34	20.4%
35 - 64	39.9%
65 - Older	11.3%

Source: U.S. Census Bureau and Applied Geographic Solutions.

The 9-county Indianapolis Region includes Boone, Hamilton, Hancock, Hendricks, Johnson, Madison, Marion, Morgan and Shelby counties.

Last Updated 4/19/2011

Indy Partnership

317-236-6262 or Toll Free 1-877-236-4332

E-mail: info@indypartnership.com

Website: www.indypartnership.com